



## RICAMBI SPARE PARTS

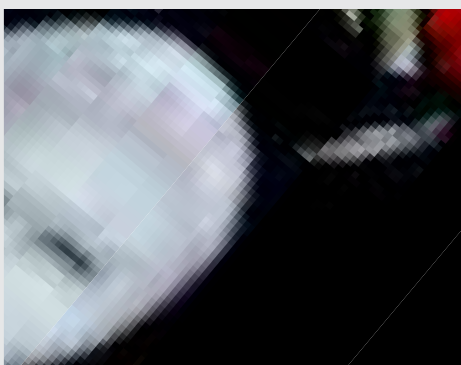
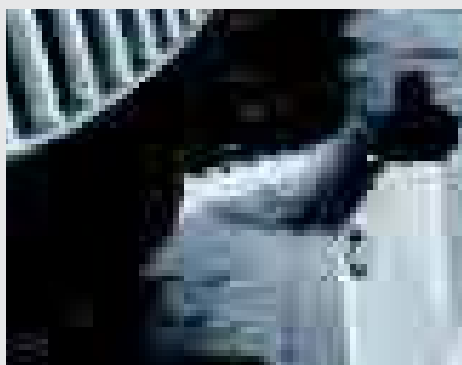
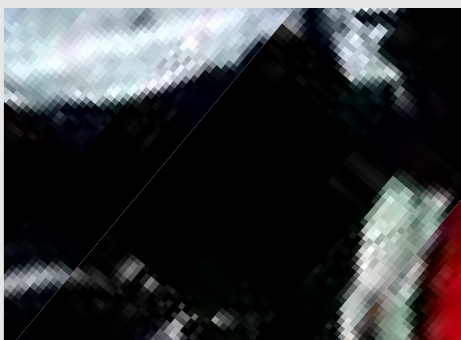
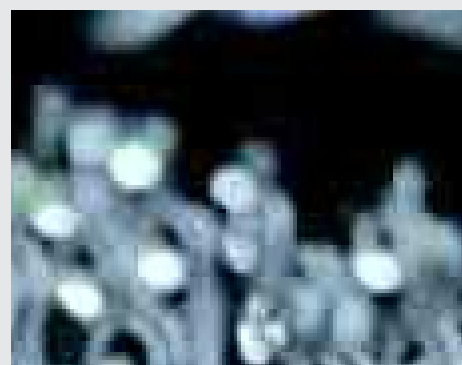
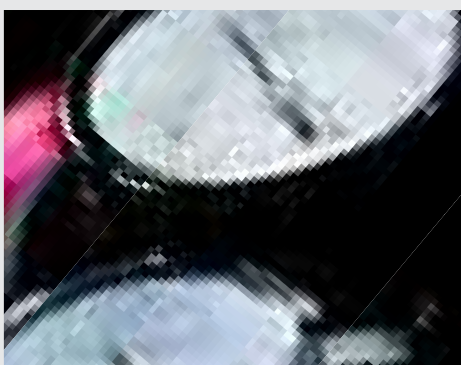
**AIRSERVICE 24**

La Shamal offre ai suoi clienti una linea completa di ricambi per l'aria compressa. La gamma include:


- valvole di ritegno e di sicurezza;
- pressostati,
- manometri,
- filtri di aspirazione,
- ruote fisse e pivottanti,
- riduttori di pressione,
- motori,
- centraline,
- paracinghia,
- elettrovalvole,
- rubinetti,
- pulegge.

*Shamal offers its customers a complete range of spare parts for compressed air systems:*


- *non return valves and safety valves,*
- *pressure switches,*
- *pressure gauges,*
- *air intake filters,*
- *wheels for tanks,*
- *pressure reducers,*
- *electric motors,*
- *electric control panels,*
- *belt guards,*
- *solenoid valves,*
- *line valves,*
- *motor pulleys.*




## Valvole di ritegno | Non return valve

	Codice Code	Descrizione Description
	9048025	Valvola di ritegno 1/2" M bicono 10 Non return valve 1/2" M valve seat 10
	9048009	Valvola di ritegno 3/4" M bicono 10 Non return valve 3/4" M valve seat 10
	9048053	Valvola di ritegno 1/2" M bicono 10 (attacco sx.) Non return valve 1/2" M valve seat 10 (with left hand fitting)
	9048003	Valvola di ritegno 3/4" M - 1/2" M Non return valve 3/4" M - 1/2" M
	9048052	Valvola di ritegno 1/2" M - 1/2" M (attacco sx.) Non return valve 1/2" M - 1/2" M (with left hand fitting)
	9048011	Valvola di ritegno 1" M - 3/4" M viton Non return valve 1" M - 3/4" M viton
	9048018	Valvola di ritegno 1" F - 1" M viton Non return valve 1" F - 1" M viton
	9048076	Valvola di ritegno 1" M bicono 18 Non return valve 1" M valve seat 18
	D078001	Valvola di ritegno 3/4" M bicono 14 Non return valve 3/4" M valve seat 14


## Valvole di sicurezza | Safety valve

	Codice Code	Descrizione Description
	9049044	Valvola di sicurezza 3/4" 11 bar omolog. ISPESL Safety valve 3/4" b14 11 bar homol. ISPESL
	4101062	Valvola di sicurezza 1/4" 8 bar Safety valve 1/4" 8 bar
	4101063	Valvola di sicurezza 3/8" 11 bar Safety valve 3/8" 11 bar
	4101065	Valvola di sicurezza 1/4" 11 bar Safety valve 1/4" 11 bar
	9049104	Valvola di sicurezza 3/8" 15 bar Safety valve 3/8" 15 bar

## Pressostati e telepressostati | Pressure switches and pressure switches

	Codice Code	Descrizione Description
	9063002	Pressostato 1 via 1/4" monofase <i>Pressure switch 1 way 1/4" 1-phase</i>
	9063007	Pressostato 1 via 1/4" trifase <i>Pressure switch 1 way 1/4" 3-phase</i>
	9063146	Telepressostato 4 vie 3/8" 4A 12 bar <i>Pressure switch with magnetic overload cutout 4 ways 3/8" 4A 12 bar</i>
	9063147	Telepressostato 4 vie 3/8" 6,3A 12 bar <i>Pressure switch with magnetic overload cutout 4 ways 3/8" 6,3A 12 bar</i>
	9063148	Telepressostato 4 vie 3/8" 10A 12 bar <i>Pressure switch with magnetic overload cutout 4 ways 3/8" 10A 12 bar</i>
	9063152	Telepressostato 4 vie 3/8" 10A 16 bar <i>Pressure switch with magnetic overload cutout 4 ways 3/8" 10A 16 bar</i>
	9063154	Telepressostato 1 via 1/4" 18A 12 bar <i>Pressure switch with magnetic overload cutout 1 way 1/4" 18A 12 bar</i>
	9063155	Telepressostato 4 vie 3/8" 16A 16 bar <i>Pressure switch with magnetic overload cutout 4 ways 3/8" 16A 16 bar</i>
	9412071	Pressostato 4 vie 1/4" monofase <i>Pressure switch 4 ways 1/4" 1-phase</i>
	9063084	Pressostato 4 vie 3/8" monofase <i>Pressure switch 4 ways 3/8" 1-phase</i>
	9063228	Telepressostato 4 vie 3/8" 16A 12 bar <i>Pressure switch with magnetic overload cutout 4 ways 3/8" 16A 12 bar</i>
	9063229	Telepressostato 4 vie 3/8" 18A 12 bar <i>Pressure switch with magnetic overload cutout 4 ways 3/8" 18A 12 bar</i>


## Manometri | Pressure gauges

	Codice Code	Descrizione Description
	9052014	Manometro Ø50 post. 1/4" 0-16 tacca rossa 8 bar <i>Pressure gauge Ø50 rear 1/4" 0-16 red notch 8 bar</i>
	9052056	Manometro Ø50 post. 1/4" 0-20 tacca rossa 11 bar <i>Pressure gauge Ø50 rear 1/4" 0-20 red notch 11 bar</i>
	9052092	Manometro Ø40 post. 1/8" 0-12 <i>Pressure gauge Ø40 rear 1/8" 0-12</i>
	4100614	Manometro Ø63 post. 1/4" 0-25 tacca rossa 15 bar <i>Pressure gauge Ø63 rear 1/4" 0-25 red notch 15 bar</i>

## Filtri di aspirazione | Air intake filters

	Codice Code	Descrizione Description
	9411129	Filtro Ø90M 16x1,5 <i>Air intake filter Ø90M 16x1,5</i>
	7981000	Filtro 3/8" M <i>Air intake filter 3/8" M</i>
	2881000	Filtro per B2800/B3800 <i>Air intake filter for B2800/B3800</i>
	SC81000	Filtro per K8/K24 <i>Air intake filter for K8/K24</i>
	SZ81000	Filtro esagonale <i>Hexagonal air intake filter</i>
	SL81000	Filtro per K30 <i>Air intake filter for K30</i>
	SP81000	Filtro per K50/100 <i>Air intake filter for K50/100</i>


## Ruote fisse e pivotanti | Wheels for tanks

	Codice Code	Descrizione Description
	9042006	Ruota Ø120 foro 15,8 / <i>Wheel Ø120 bore 15,8</i>
	9042022	Ruota Ø175 foro 12 / <i>Wheel Ø175 bore 12</i>
	9412038	Ruota Ø150 foro 15 / <i>Wheel Ø150 bore 15</i>
	9412244	Ruota Ø200 foro 16 / <i>Wheel Ø200 bore 16</i>
	9044013	Ruota pivotante Ø100 / <i>Caster wheel Ø100</i>
	9042030	Ruota Ø175 foro 12 / <i>Wheel Ø175 bore 12</i>
	9042032	Ruota Ø250 foro 15 / <i>Wheel Ø250 bore 15</i>
	9415019	Ruota Ø300 foro 25 / <i>Wheel Ø300 bore 25</i>
	9414363	Ruota pivotante Ø75 / <i>Caster wheel Ø75</i>
	9044018	Ruota pivotante Ø100 / <i>Caster wheel Ø100</i>

## Kit Ruote | Wheels Kit for tanks

	Codice Code	Descrizione Description
	9420222	Kit ruote Ø120 24L / Wheel kit Ø120 24L
	9420152	Kit ruote Ø175 50L vert. / Wheel kit Ø175 50L vert.
	9420104	Kit ruote Ø150 50L / Wheel kit Ø150 50L
	9420084	Kit ruote Ø200 100-150L / Wheel kit Ø200 100-150L
	9420652	Kit ruote Ø175 50L / Wheel kit Ø175 50L
	9420245	Kit ruote Ø250 100-270L / Wheel kit Ø250 100-270L
	9420596	Kit ruote Ø300 270L / Wheel kit Ø300 270L

## Riduttori di pressione | Pressure reducers

	Codice Code	Descrizione Description
	9051080	Riduttore micro 1/4" a con 1 rub. Micro pressure reducer 1/4" a with 1 line valve
	9051116	Riduttore micro 1/4" a senza rub-man. Micro pressure reducer 1/4" a without line valve and pressure gauge
	9051087	Riduttore mignon 3/8" con 2 rub., attacco rapido universale Mignon pressure reducer 3/8" with 2 line valve, quick release coupling
	9051002	Riduttore PU4 1/2" con 2 rub., attacco a baionetta PU4 pressure reducer 1/2" with 2 line valve, quick connector bayonet
	9051091	Riduttore PU4 1/2" con 2 rub., attacco a baionetta PU4 pressure reducer 1/2" with 2 line valve, quick connector bayonet


## Motori | Electric motors

	Codice Code	Descrizione Description
	<b>Motori 230 V - 50 Hz monofase   Electric motors 230 V - 50 Hz 1-phase</b>	
	4101121	Motore hp2 MEC80 240/50 V / Motor hp2 MEC80 240/50V
	4101122	Motore hp3 MEC90L 220/50 V / Motor hp3 MEC90L 220/50V
	<b>Motori 230/400 V - 50 Hz trifase   Electric motors 230/400 V - 50 Hz 3-phase</b>	
	845S000	Motore hp3 trifase 230/400 V MEC90 s3-75 / Motor hp3 3-phase 230/400 V MEC90 s3-75
	846S000	Motore hp4 trifase 230/400 V MEC90 s3-75 / Motor hp4 3-phase 230/400 V MEC90 s3-75
	846S010	Motore hp4 trifase 230/400 V MEC100 s3-75 / Motor hp4 3-phase 230/400 V MEC100 s3-75
	847S000	Motore hp5,5 trifase 230/400 V MEC112 s3-75 / Motor hp5,5 3-phase 230/400 V MEC112 s3-75
	847S010	Motore hp5,5 trifase 230/400 V MEC100 s3-75 / Motor hp5,5 3-phase 230/400 V MEC100 s3-75
	848S000	Motore hp7,5 trifase 230/400 V MEC112 s3-75 / Motor hp7,5 3-phase 230/400 V MEC112 s3-75
	848S010	Motore hp7,5 trifase 230/400 V MEC132 s3-75 / Motor hp7,5 3-phase 230/400 V MEC132 s3-75
	849S000	Motore hp10 trifase 230/400 V MEC132 s3-75 / Motor hp10 3-phase 230/400 V MEC132 s3-75
	<b>Motori 400/700 V - 50 Hz trifase   Electric motors 400/700 V - 50 Hz 3-phase</b>	
847T000	Motore hp5,5 trifase 400/700 V MEC112 s3-75 / Motor hp5,5 3-phase 400/700 V MEC112 s3-75	
847T010	Motore hp5,5 trifase 400/700 V MEC100 s3-75 / Motor hp5,5 3-phase 400/700 V MEC100 s3-75	
848T000	Motore hp7,5 trifase 400/700 V MEC112 s3-75 / Motor hp7,5 3-phase 400/700 V MEC112 s3-75	
848T010	Motore hp7,5 trifase 400/700 V MEC132 s3-75 / Motor hp7,5 3-phase 400/700 V MEC132 s3-75	
849T000	Motore hp10 trifase 400/700 V MEC132 s3-75 / Motor hp10 3-phase 400/700 V MEC132 s3-75	
84AT010	Motore hp15 trifase 400/700 V MEC160 / Motor hp15 3-phase 400/700 V MEC160	
84BT010	Motore hp20 trifase 400/700 V MEC160 / Motor hp20 3-phase 400/700 V MEC160	

## Centraline Tandem | Tandem electric controls panels

	Codice Code	Descrizione Description
	9062094	Centralina Tandem - avviamento diretto hp 4+4 - hp 5,5+5,5 400/700 V Tandem electric control panel - direct starter hp 4+4 - hp 5,5+5,5 400/700 V
	9062084	Centralina Tandem - avviamento diretto hp 7,5+7,5 400/700 V Tandem electric control panel - direct starter hp 7,5+7,5 400/700 V
	9062083	Centralina Tandem - avviamento diretto hp 10+10 400/700 V Tandem electric control panel - direct starter hp 10+10 400/700 V
	9062095	Centralina Tandem - avviamento diretto hp 15+15 400/700 V Tandem electric control panel - direct starter hp 15+15 400/700 V
	9062078	Centralina Tandem - avviamento stella a triangolo hp 4+4 400/700 V Tandem electric control panel - star-delta starter hp 4+4 400/700 V
	9062076	Centralina Tandem - avviamento stella a triangolo hp 5,5+5,5 400/700 V Tandem electric control panel - star-delta starter hp 5,5+5,5 400/700 V
	9062077	Centralina Tandem - avviamento stella a triangolo hp 7,5+7,5 400/700 V Tandem electric control panel - star-delta starter hp 7,5+7,5 400/700 V
	9062079	Centralina tandem - avviamento stella a triangolo hp 10+10 400/700 V Tandem electric control panel - star-delta starter hp 10+10 400/700 V
	9062080	Centralina tandem - avviamento stella a triangolo hp 15+15 400/700 V Tandem electric control panel - star-delta starter hp 15+15 400/700 V



## Avviatori Stella/Triangolo | Star/Delta starters

	Codice Code	Descrizione Description
	9062070	Avviatore st/tr hp 5,5 400/700 V Star/delta starter hp 5,5 400/700 V
	9062019	Avviatore st/tr hp 7,5 400/700 V Star/delta starter hp 7,5 400/700 V
	9062058	Avviatore st/tr hp 10 400/700 V Star/delta starter hp 10 400/700 V
	9062061	Avviatore st/tr hp 15 400/700 V Star/delta starter hp 15 400/700 V
	9062703	Avviatore st/tr hp 20 400/700 V Star/delta starter hp 20 400/700 V

## Paracinghia | Belt guards


	Codice Code	Descrizione Description
 	8223070	Kit paracinghia plastica SB28 (2pz.) Plastic belt guard kit SB28 (2pcs.)
	8223071	Kit paracinghia plastica SB38 (2pz.) Plastic belt guard kit SB38 (2pcs.)
	8224019	Kit paracinghia plastica K11 MEC80 Plastic belt guard kit K11 MEC80
	8224018	Kit paracinghia plastica K17/K18 Plastic belt guard kit K17/K18
	8224017	Kit paracinghia plastica K18/K30 Plastic belt guard kit K18/K30
	8224016	Kit paracinghia rete K25/28/30 Net belt guard kit K25/28/30
	8224014	Kit paracinghia rete K50/60/100 Net belt guard kit K50/60/100

## Elettrovalvole | Solenoid valves

	Codice Code	Descrizione Description
 	9064462	Elettrovalvola 3/8" 24 V Solenoid valve 3/8" 24 V
	9064469	Elettrovalvola 1/2" 24 V Solenoid valve 1/2" 24 V
	#008195010	Elettrovalvola 2Vie NA G1/4" 24V Solenoid Valve 2Way NO G1/4" 24V
	#008223000	Elettrovalvola 2Vie NA G1/8" 24V Solenoid Valve 2Way NO G1/8" 24V



### Rubinetti | Line valves

	Codice Code	Descrizione Description
	9047051	Rubinetto sfera 3/8" M / <i>Line ball valve 3/8" M</i>
	9047071	Rubinetto att.univ. 1/4" M (nichel.) / <i>Line valve 1/4" M quick coupling</i>
	9047072	Rubinetto att. univ. 1/2" M (nichel.) / <i>Line valve 1/2" M quick coupling (nickel)</i>
	9047062	Rubinetto sfera 1/4" M / <i>Line ball valve 1/4" M</i>
	9053063	Rubinetto spurgo GC 3/8" / <i>Condensate drain valve GC 3/8"</i>
	4100811	Rubinetto att. univ. 1/4" M / <i>Line valve 1/4" M quick coupling</i>
	9412204	Rubinetto att.univ. 1/4" M / <i>Line valve 1/4" M quick coupling</i>

### Pulegge | Motor pulleys

	Codice Code	Descrizione Description
	9076010	Puleggia Ø90 - 1A foro 19 / <i>Pulley Ø90 - 1A bore 19</i>
	9076020	Puleggia Ø110 - 1A foro 19 / <i>Pulley Ø110 - 1A bore 19</i>
	9076021	Puleggia Ø110 - 1A foro 24 / <i>Pulley Ø110 - 1A bore 24</i>
	9076030	Puleggia Ø130 - 1A foro 19 / <i>Pulley Ø130 - 1A bore 19</i>
	9076032	Puleggia Ø120 - 1A foro 19 / <i>Pulley Ø120 - 1A bore 19</i>
	9076003	Puleggia Ø130 - 1A foro 24 / <i>Pulley Ø130 - 1A bore 24</i>
	9076600	Puleggia Ø140 - 1B foro 38 / <i>Pulley Ø140 - 1B bore 38</i>
	9076601	Puleggia Ø150 - 1A foro 28 / <i>Pulley Ø150 - 1A bore 28</i>
	9076602	Puleggia Ø180 - 2B foro 38 / <i>Pulley Ø180 - 2B bore 38</i>
	9076603	Puleggia Ø130 - 1A foro 28 / <i>Pulley Ø130 - 1A bore 28</i>